

ADVANCED ECHOCARDIOGRAPHY COURSE

Day 1

Monash Teaching Rooms, Level 5 The Alfred Centre (Lift B Entry)

08.30 – 08.45

Registration

08.45 – 09.00

Introduction

09.00 – 09.40

Lecture: how to perform a comprehensive hemodynamic assessment

09.40 – 10.30

Practical: small group cases, reporting, hemodynamic calculations

10.30 – 11.00

Morning Tea

11.00 – 11.40

Lecture: advanced techniques in LV function and geometry assessment

11.40 – 12.30

Practical: Live scanning, reporting, measurements

12.30 – 13.30

Lunch

13.30 – 14.10

Lecture: Tricks to understanding the right heart and pulmonary pressure estimation

14.10 – 14.50

Practical: small group cases, reporting, calculations

14.50 – 15.20

Afternoon Tea

15.20 – 16.00

Lecture: Integrating the LV and RV: dyssynchrony, circulatory support, cardiomyopathies

16.00 – 16.40

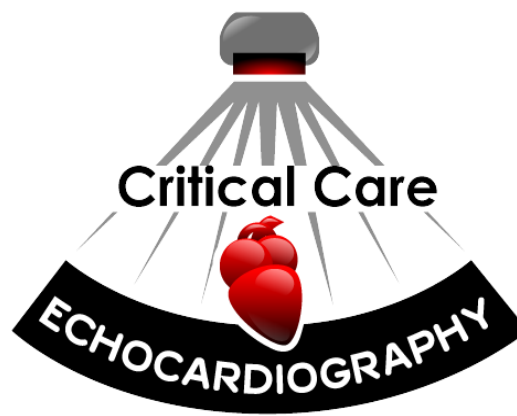
Practical: Scanning, small group cases studies

16.40 – 17.00

Lecture – Summary of days learning

17.00

Drinks at a local venue



ADVANCED ECHOCARDIOGRAPHY COURSE

Day 2

Monash Teaching Rooms, Level 5 The Alfred Centre (Lift B Entry)

08.45 – 09.00	Registration
09.00 – 09.40	Lecture: Aortic stenosis and mitral stenosis: keys point to accurate assessment
09.40 – 10.20	Practical: Scanning, case studies, calculation stations
10.30 – 11.00	Morning Tea
11.00 – 11.40	Lecture: Understanding aortic and mitral regurgitation,
11.40 – 12.30	Practical: Live scanning, calculation stations, endocarditis cases
12.30 – 13.10	Lunch
13.10 – 14.10	Lecture: Keys to understanding cardiac shunts and congenital heart disease
14.10 – 14.50	Practical: Scanning, case studies, calculation stations
14.50 – 15.20	Afternoon Tea
15.20 – 16.00	Lecture: Understanding pericardial constriction and tamponade
16.00 – 16.40	Practical: flow dynamics in pericardial disease, cases
16.40 – 17.00	Course summary, questions
17.00	Course close